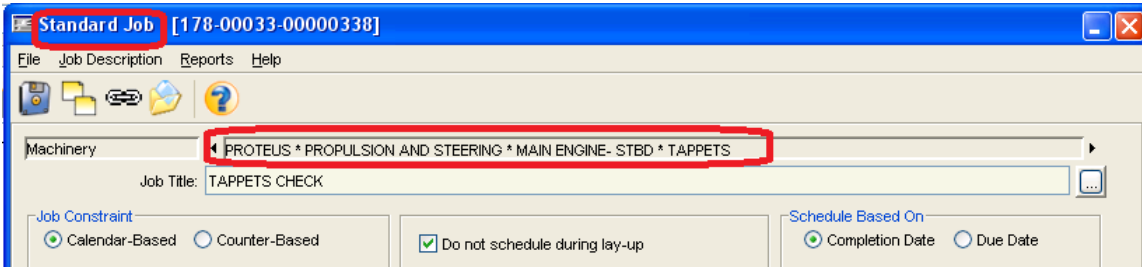
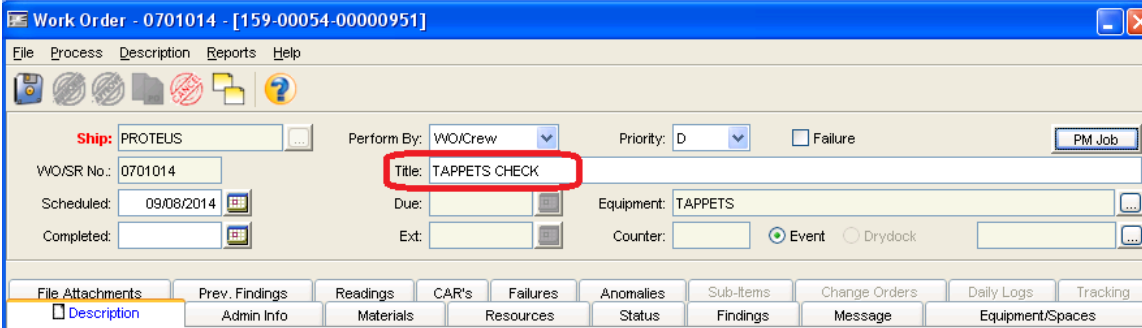


# Cheat Sheet #14 Finding the full name of the standard job to identify equipment

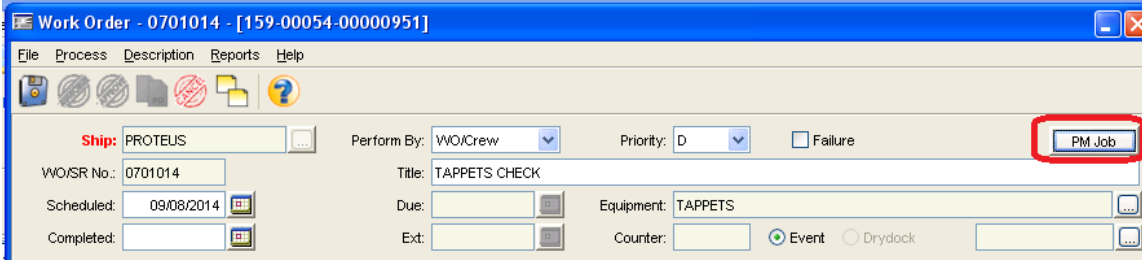
All standard jobs will include the full name of the job, including the equipment the job is for, in the complete title. See below:



The problem is, when it is turned into a work order, that information disappears.



Here's how you find it again. Click on the PM Job button at the top of the WO.



And it will pull up the standard job with the full name.

